

# INSTALLATION INSTRUCTIONS

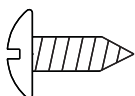
**FOR USE ONLY WITH DVL(25,33)FP-1 AND DVL(25,33)FP7-2 SERIES FIREPLACES**

**INSTRUCTIONS MUST BE LEFT WITH THE OWNER FOR FUTURE REFERENCE AFTER INSTALLATION.**

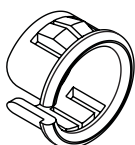
SURROUNDS	DECORATIVE FRONT KITS
DS(25,33)66BL-1	DFB(25,33)R(BL,HP,SS)-1

## HARDWARE FOR SURROUND

### HARDWARE



#8-18 x 1/2" TRUSS-HEAD SCREWS - QTY 3



BUSHING - QTY 1

The following instructions apply to installation of the Decorative Fronts and Surrounds.

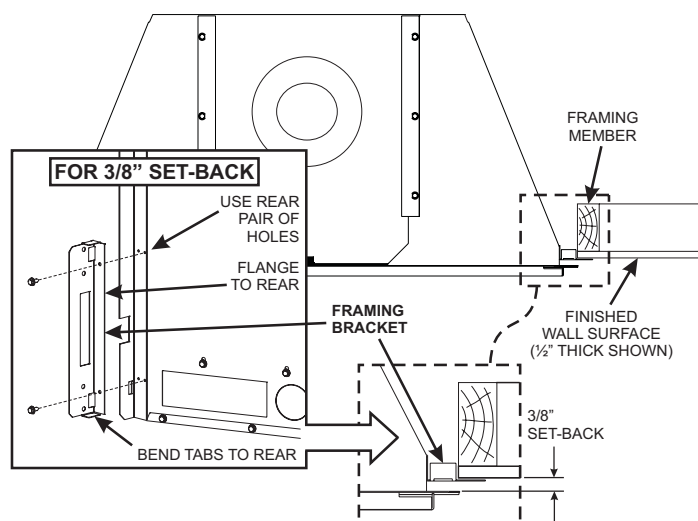
**NOTE:** The Direct-Vent Fireplace must be installed into the fireplace cavity with all venting, gas and electrical connections completed prior to installation of the Surround and Front assemblies.

**NOTE:** All Fronts require the installation of a 4-Sided Surround as shown in **Figure 2**.

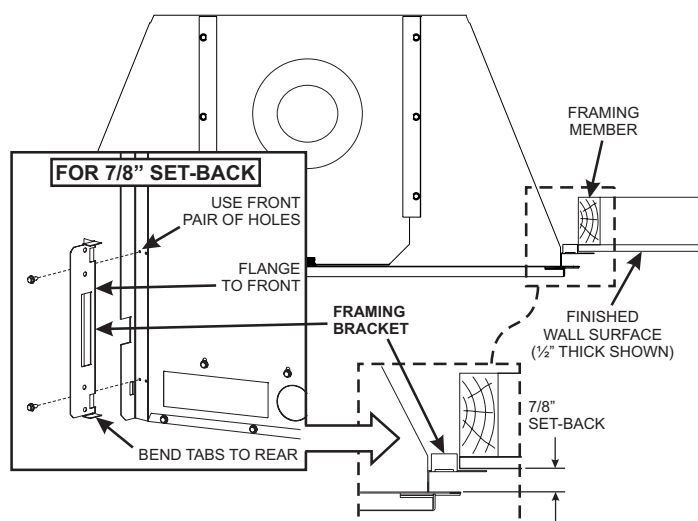
### Securing the Fireplace

1. Installation of the fireplace in the framed out wall opening will require that the side and top flanges of the fireplace face (with glass door removed) be a minimum of 3/8-inch forward from the surface of the finished wall. **See Figure 1a.**
2. If needed the framing brackets can be installed as shown in **Figure 1b** to allow an additional 1/2-inch (7/8-inch total) set back for finishing materials such as tile, glass or marble.

**NOTE:** The framing brackets include two hand-bend tabs at the top and bottom of the bracket. Depending on which way the brackets are mounted (**Figures 1a and 1b**), bend these tabs rearward to assist in maintaining the proper combustible clearance to the fireplace sides.



**Figure 1a**



**Figure 1b**

**NOTE:** The side framing brackets provided with the fireplace include mounting holes. In addition, there are two sets of pilot holes in the sides of the fireplace to mount the framing brackets, which will allow for various setback positions. Choose the mounting holes that secure the fireplace forward of the finished wall material 3/8-inches as recommended in step 1.

## Installation of Surrounds

1. Install the upper deflector to the surround as shown in **Figure 2**. Secure with three #8-18 x 1/2 PH.HD. screws. Make sure the deflector is directed upward as shown in **Figure 2**.
2. After the Direct Vent Fireplace has been installed with all required connections completed, install the Surround by placing the upper surround flange over the top flange of the fireplace cabinet.
3. Center the surround left to right, then swing the legs of the surround inward to the side flanges of the fireplace. Lift each surround leg slightly so that the lower retaining hooks engage the notched out areas in the side flanges. **See Figure 2**.
4. If power is connection is needed outside of fireplace, break knockout **Figure 2**. Place cord through cutout and snap bushing in hole.

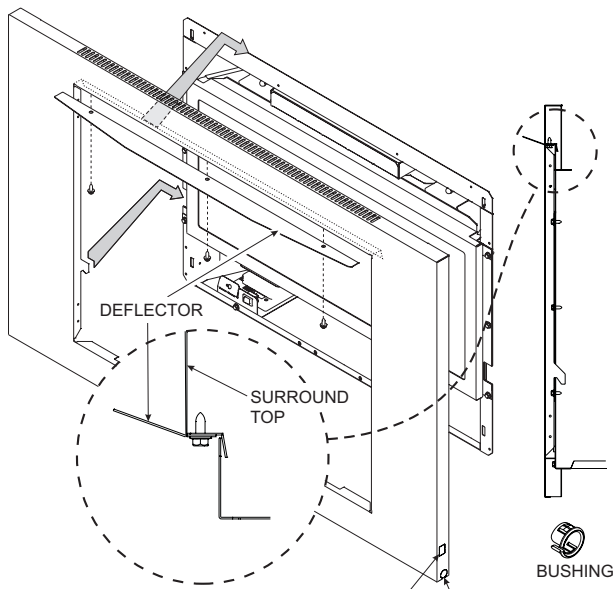


Figure 2

## Installation of Decorative Front kits

1. Carefully unpack the Decorative Front assembly. This kit comes fully assembled.
2. To install, a Surround must be secured to the Fireplace. **See Figure 2**.
3. Install the Decorative Front to the Insert by aligning the four extended fingers on the back of the Decorative Front with the slots located in the side flanges of the Fireplace. **See Figure 3**.

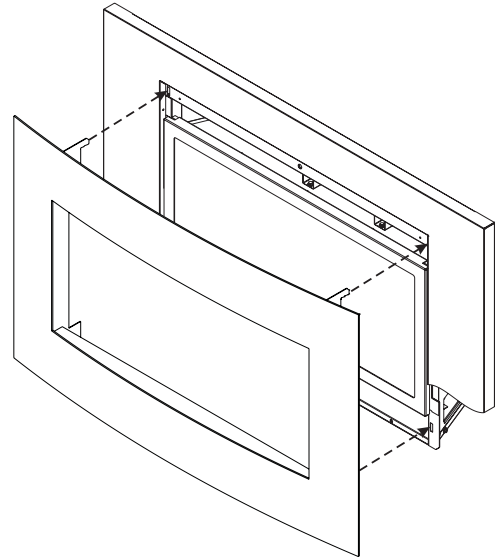
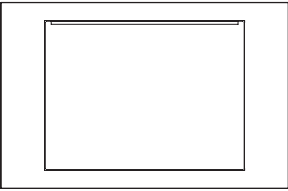
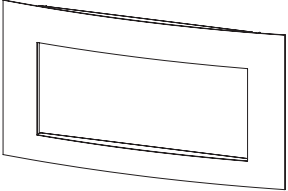


Figure 3

4. Once the four fingers are started, gently push the Front assembly inward until it is fully engaged with the Fireplace. **NOTE:** the Decorative Front will set out from the Surround approximately 2 to 3 inches.

SURROUNDS	MODELS AND FINISH OPTIONS
<p><b>4-Sided Surround</b></p> 	<p>DS(25,33)66BL</p> <ul style="list-style-type: none"> <li>• Black</li> </ul> <p>Required for use with Eclipse style fronts.</p>

DECORATIVE FRONT KITS	MODEL AND FINISH OPTIONS
<p><b>Eclipse</b></p> 	<p>DFB(25,33)R(BL,HP,SS)</p> <ul style="list-style-type: none"> <li>• Black</li> <li>• Hammered Pewter</li> <li>• Stainless Steel</li> </ul> <p><b>NOTE:</b> Must also use 4-sided surround. Install surround before installing decorative front.</p>



SINCE 1932

**Empire Comfort Systems Inc.**  
**Belleville, IL**

If you have a general question  
about our products, please e-mail  
us at [info@empirecomfort.com](mailto:info@empirecomfort.com).

If you have a service or repair  
question, please contact your dealer.

**[www.empirecomfort.com](http://www.empirecomfort.com)**